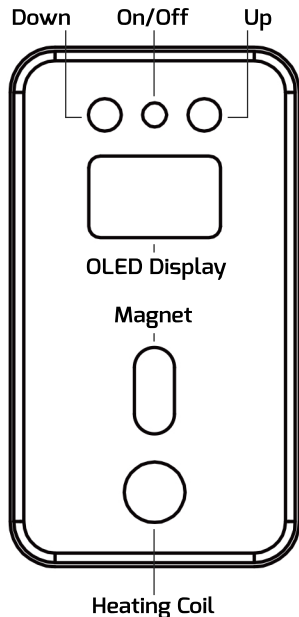


# CUBOO HEATER PRO V2



## Switch on

Press the power button three times to turn the device on. It is now in Watt mode.



## Power Mode

Set the Cuboo Induction Heater Pro V2 to the desired wattage (30W - 60W) using the up and down buttons. The device is now ready for use.



## Boost Mode

Press the up and down buttons simultaneously to change the mode. Boost mode operates the Cuboo Heater Pro V2 at the maximum power of the batteries used. In boost mode, an output of over 70W can be achieved.



## Timer

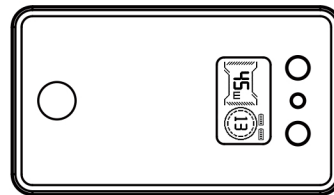
To set the timer, press the on/off button twice and set the timer to the desired number of seconds (10 - 60 seconds) using the up and down buttons.

## Safety shutdown

The device switches off automatically after 10 minutes of inactivity.

## Warning

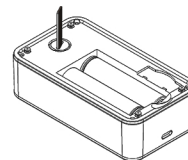
Due to the fast heating of the heating coil, the aluminum shell of the appliance can get very hot. If this is the case, allow the device to cool down for 5 minutes before starting another heating cycle.



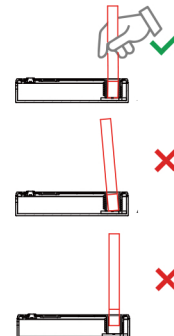
**HIGH TEMP**

## Height of the heating chamber

You can adjust the height of the heating chamber individually. To do this, remove the battery cover on the back of the device. Use the tool provided to turn the thread and adjust the height.



This is the best way to position your VapCap:



Place vertically and keep contact with the ground.

Avoid inclined position.

Always maintain contact with the ground.

The device is covered by a 12-month warranty from the date of purchase; in the event of a defect, please contact us by e-mail at: [shop@verdampftnochmal.de](mailto:shop@verdampftnochmal.de)

Manufacturer:  
YLLVAPE Technology Co., Ltd.  
Block A2 HuaFeng  
Intelligence Valley  
Hangcheng Street  
Baoan District  
518100 Shenzhen China

Importer: **Verdampftnochmal**  
VDN Berlin GmbH  
Karl-Kunger-Str. 28  
12435 Berlin  
[verdampftnochmal.de](http://verdampftnochmal.de)

CE RoHS

